

CTV/FSV MHO-GURLI



Vessel Specifications

Build	2019
Shipyard	BTS
Flag	Danish
CLASS	✶ 1A HSLC Crew Windfarm R1
Trade area	Worldwide
Length O.A.	39 m
Beam	10,3 m
Max draft	1,8 m
Air draft	13,8 m
Bow fender height	3,2 - 4,2 m
GT	365,4
NT	109,6
IMO No.	9852509
Call Sign	OXJL2
MMSI	219023785
E-mail	Mho-gurli@mho-co.dk
Telephone	+45 53 69 46 45
Satellite Phone	+45 82 13 64 22

Performance

Max speed @ workload	30 knots
Max speed @ full load	25 knots
Range @ 15 knots	3.000 Nm

Crew and IP facilities

Crew	3-8
Beds	8 x single cabins, 4 x doble cabins (16 total)
IP capacity	24
Suspension Seats	24
Seating area	8 x Tables with seats
Accessibilities	WI-FI throughout the vessel 4 x 32" TVs for safety videos 1 x lounge with sofa and 42" TV
Pantry	Stove, microwave, coffeemaker and kettle
Coolers	3 x Refrigerator, 3 x freezers

Capacities

Ship tanks	2 x 16.000 L, total 32.000 L
Cargo tanks	2 x 15.000 L, total 30.000 L
Fresh water	Fresh water treatment with 2,5 m ³ tank
Sewage	Sewage treatment plant with 2 m ³ tank
Max cargo	With 12.000 L fuel: 60.340 kg
Forward deck area	100 m ² with 1 t/m ² , partly 2 t/m ²
Aft deck area	40 m ² with 1 t/m ²
Total deck area	140 m ²
Container fittings	[2 x 40'] or [5 x 20'] or [10 x 10']

MHO-Co A/S • Havdigevej 39 • DK-6700 Esbjerg • VAT/CVR: DK37454427
(+45) 53 70 46 45 • info@mho-co.dk • www.mho-co.dk

CTV/FSV MHO-GURLI



Deck equipment

Crane	AMCO VEBA 825-4S: SWL: 1.600 Kg @ 12 m
Fuelling	1 x 40 m 2" hose
Pump capacity	750 L/min @ 23 m, 400 L/min @ 45 m
Pressure washer	High pressure washer with 40 m hose
Deck output	3 x reefer plugs
Moonpool	2000 mm x 2295 mm

Engines

Main	4 x Cummins K38-M 746 kW
Auxiliary	2 x Cummins QD 50 Hz 50 kW 400V & 230V
Gear boxes	4 x Reinjets 430 VLI
Jets	KaMeWa S50-3/CA
Bow thrusters	2 x DT2 50 Kw Hydraulic tunnel thrusters

Navigation equipment

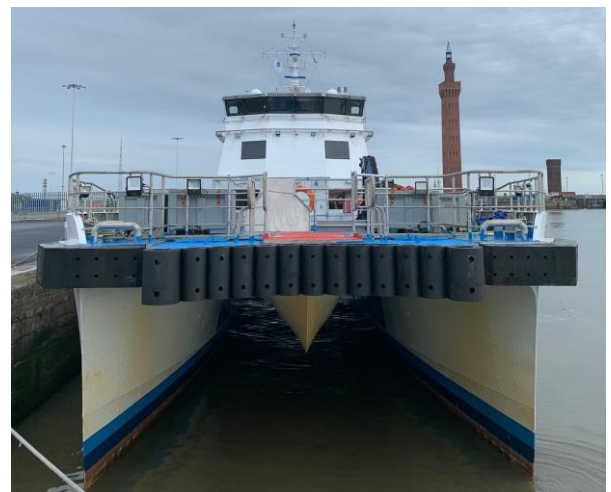
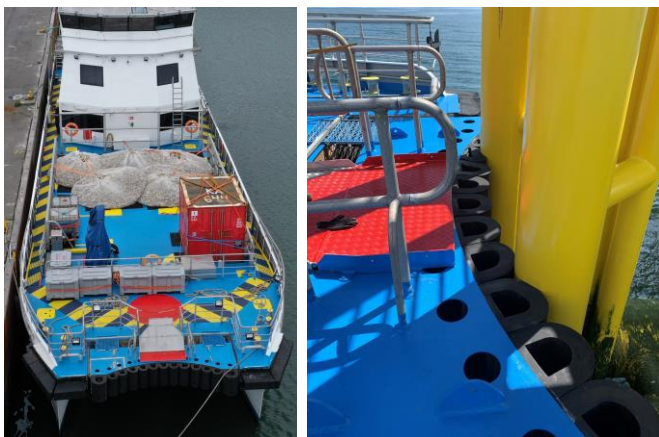
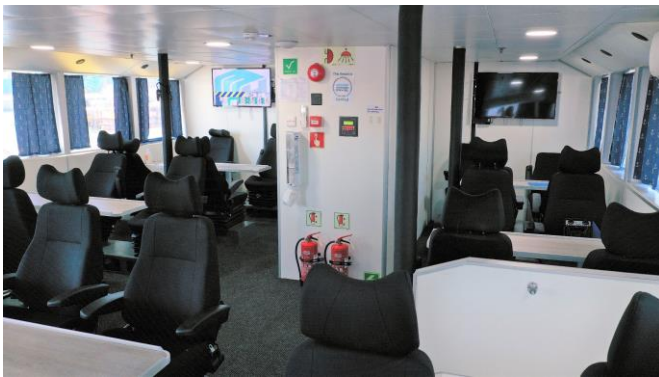
Radar	Furuno FAR-1518-BB ARPA Radar
Radar	Furuno DRS-4D-NXT
ECDIS	2 X Furuno FMD-3100 full ECDIS
VHF	2 x Furuno FM-8900S
VHF	Motorola DM-4400E with P-channels
MF/HF	Furuno FS-1575
AIS	McMurdo Smart find M5
Sat Compass	Furuno SC-70
GPS	Furuno GP-170
Echo sounder	Furuno FCV-588
Navtex	FurunoNX-700
Speed log	Furuno GS-100
Autopilot	Navitron NT888G
Motion dampening	Humphree Active Ride Control

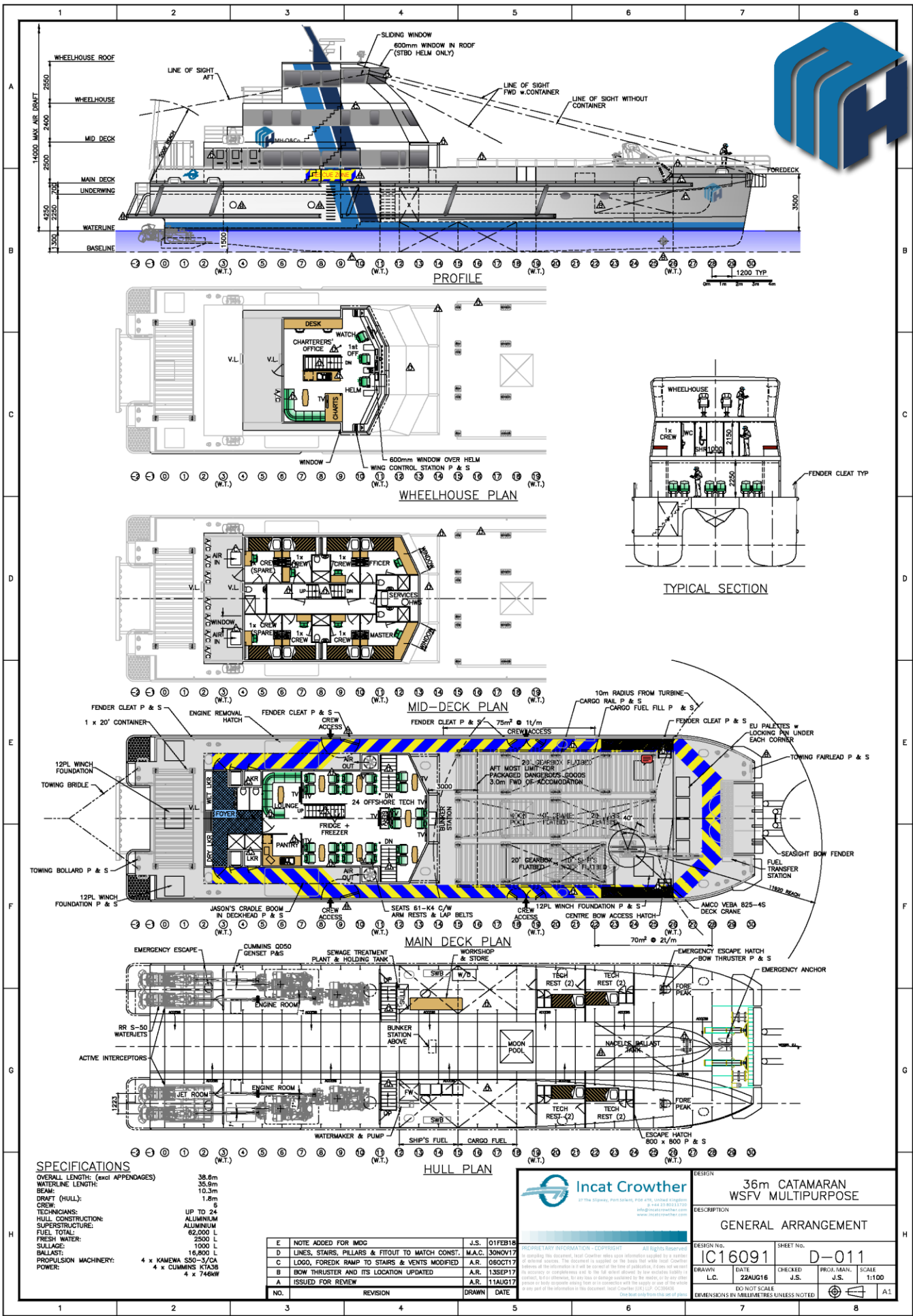
Bridge control

Manoeuvring	Rolls Royce control units with joystick w/ docking mode, Rolls Royce "DP" system
Navigation lights	Lopolight LED navigation lights
Monitoring	Praxis control unit CCTV with 24 cameras and 10 days storing Rolls Royce 10" monitor for jets
BWA	Furuno BR-500 Bridge watch alarm

Charter facilities

On bridge	1 Desk with 2 workstations Sofa with 42" TV Refrigerator, sink, coffeemaker and kettle
-----------	--





SPECIFICATIONS

OVERALL LENGTH: (excl APPENDAGES)	38.6m
WATERLINE LENGTH:	35.8m
BEAM:	10.3m
DRAFT (HULL):	1.8m
CREW:	6
TECHNICIANS:	UP TO 24
HULL CONSTRUCTION:	ALUMINIUM
SUPERSTRUCTURE:	ALUMINIUM
FUEL TOTAL:	62,000 L
FRESH WATER:	2500 L
SULLAGE:	1000 L
BALLAST:	16,800 L
PROPULSION MACHINERY:	4 x KAMEWA S50-3/CA 4 x CUMMINS KT308
POWER:	4 x 746kW

NO.	REVISION	DRAWN	DATE
E	NOTE ADDED FOR IMDG	J.S.	01FEB18
D	LINES, STAIRS, PILLARS & FITTING TO MATCH CONST.	M.A.C.	30NOV17
C	LOAD, FOREKAMP TO STAIRS & VENTS MODIFIED	A.R.	06OCT17
B	BOW THRUSTER AND ITS LOCATION UPDATED	A.R.	13SEP17
A	ISSUED FOR REVIEW	A.R.	11AUG17



DESIGN: 36m CATAMARAN
WSFV MULTIPURPOSE

DESCRIPTION		GENERAL ARRANGEMENT	
DESIGN No.	IC16091	SHEET No.	D-011
DRAWN L.C.	DATE 22AUG16	CHECKED J.S.	PROJ. MAN. J.S.
SCALE 1:100		SCALE A.1	